



LIGHTCOCE
INNOVATE TOGETHER

Introduction to OITB LightCoce and its Open call

Prof. Maria Taxiarchou, NTUA

The LightCoce single-entry point (SEP)

- Established recently in the form of spin-off
- Headquarters in Athens, Greece
- Established in the framework of H2020 *LightCoce* project
- Holistic services for the development of novel concepts, in the fields of lightweight ***concrete, conventional and advanced ceramics***
- ***One stop shop*** covering the whole value chain from the upscaling of a new product, material or technology to its commercialization

<http://lightcoce.com>

The LightCoce network



UNIVERSITÀ
DEGLI STUDI
DI PADOVA



Sustainable
INNOVATIONS®

ADVANCED
MATERIAL
SIMULATION



STAM
MASTERING EXCELLENCE

A strong network of
competences along the
entire LightCoce value chain

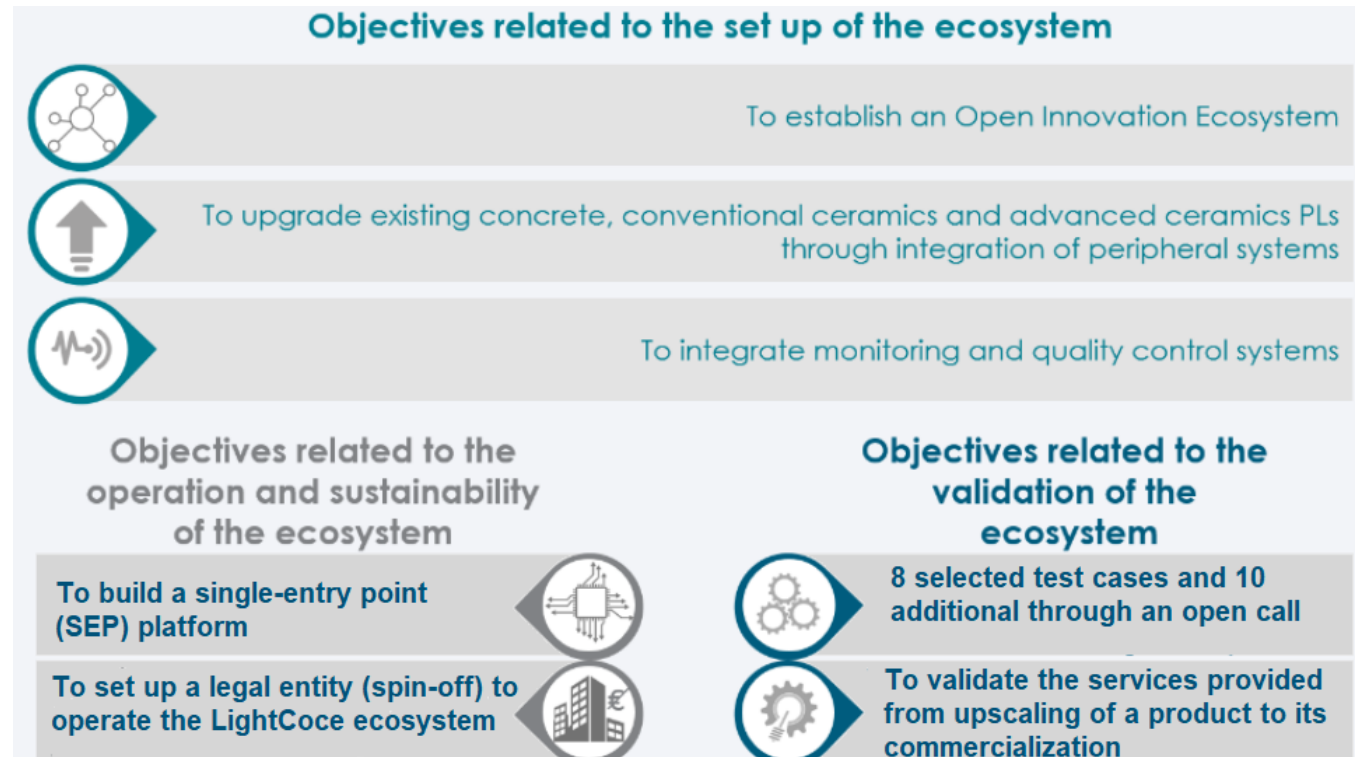


H2020 LightCoce project

(<https://www.lightcoce-oitb.eu/>)



- Consortium of 16 partners of the SEP & 10 industrial partners
- Goal: Establishment & validation of the **SEP** and the services provided
- Open call is funded by the EC through the LightCoce project



Services & Partners

A. Pilot scale facilities
(NTUA, RISE, THN, ITC-AICE, INOP, STAM)

F. Innovation Management services
(AXIA, UNISMART, SIE)

B. Characterisation services
(FIW, UPD, NTUA, RISE, THN, ITC-AICE, INOP)

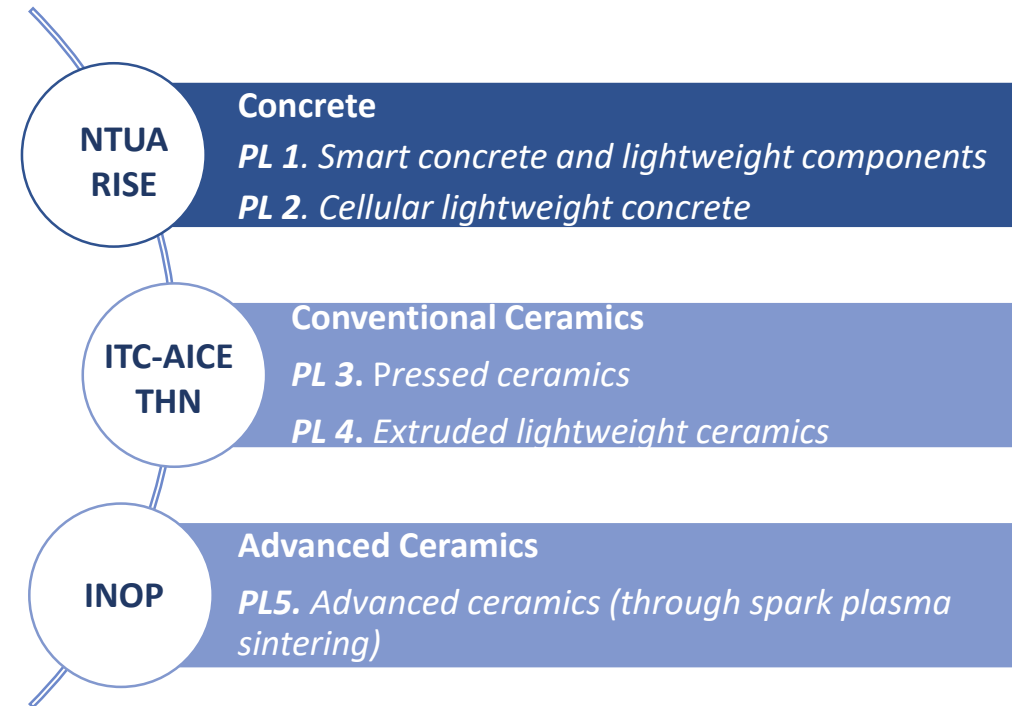


C. Modelling services
(AMS, IDE, ZERO-E)

D. Standardisation, Regulatory & Safety Assessment services (ISQ, FIW, ITC-AICE, ASHRAE)

Upscaling / testing services

- 3 thematic areas provided by 5 pilot scale facilities
- Production of materials in scale closer to the industrial, succeeding to cover the gap between lab development and full-scale production
- Services cover both conventional materials but also materials with special requirements (lightweight or additional nano-enabled functionalities)



“lab scale accuracy in a pilot scale”

Complementary services

- Characterization – Certification (structural and morphological, mechanical, thermal and hydrothermal properties, nano-enabled functionalities)
- Modelling (process and material)
- Standardisation, Regulatory & Safety Assessment (HSE assessment, LCA, LCC, eco-efficiency analysis, regulatory and standardization compliance)
- Innovation management (business modelling and planning, marketability assessment, IPR services)

Open call

WHAT?

- Addressed to companies operating in the fields of concrete or ceramics, interested in developing novel concepts within the lightweight, advanced materials' value chain.
- Interested companies can access the LightCoce ecosystem **free of charge** and develop new business ideas benefiting from the services provided by the SEP

WHO?

- SMEs, large enterprise and industry as well as R&D organizations, legally established in an EU member state or associated country

“innovate together”



Open call

WHY?

- **Free of charge access** to the services and facilities available in the LightCoce ecosystem; opportunity to innovate and develop your business idea through a one stop shop; receive mentoring and support from highly specialized experts

HOW?

- The open call will be launched through the LightCoce online platform (<http://lightcoce.com>) at the end of May 2021 and applications are welcome until the end of August, with an intermediate cut-off date at the end of June.



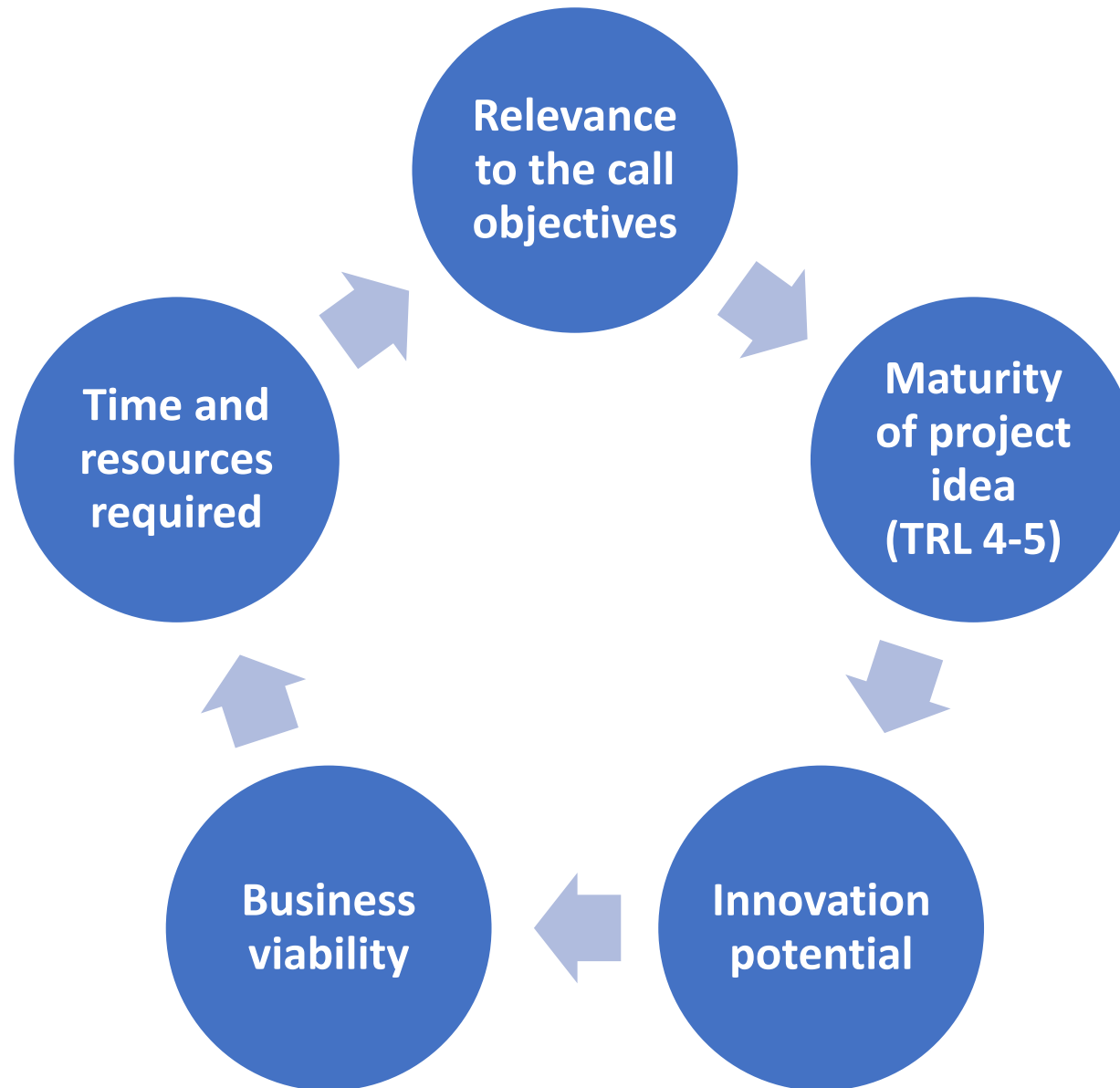
“Gain access to services driven by your special business needs”

Eligibility criteria



1. The field of Interest of the new test case
- 2 Type of Entity (SMEs, large enterprises, R&D organizations)
3. Country of establishment of the interested entity
- 4 Maturity of the proposed technology
- 5 Time and cost needed for the implementation of the test case
6. Innovation potential and industrial relevance

Evaluation criteria

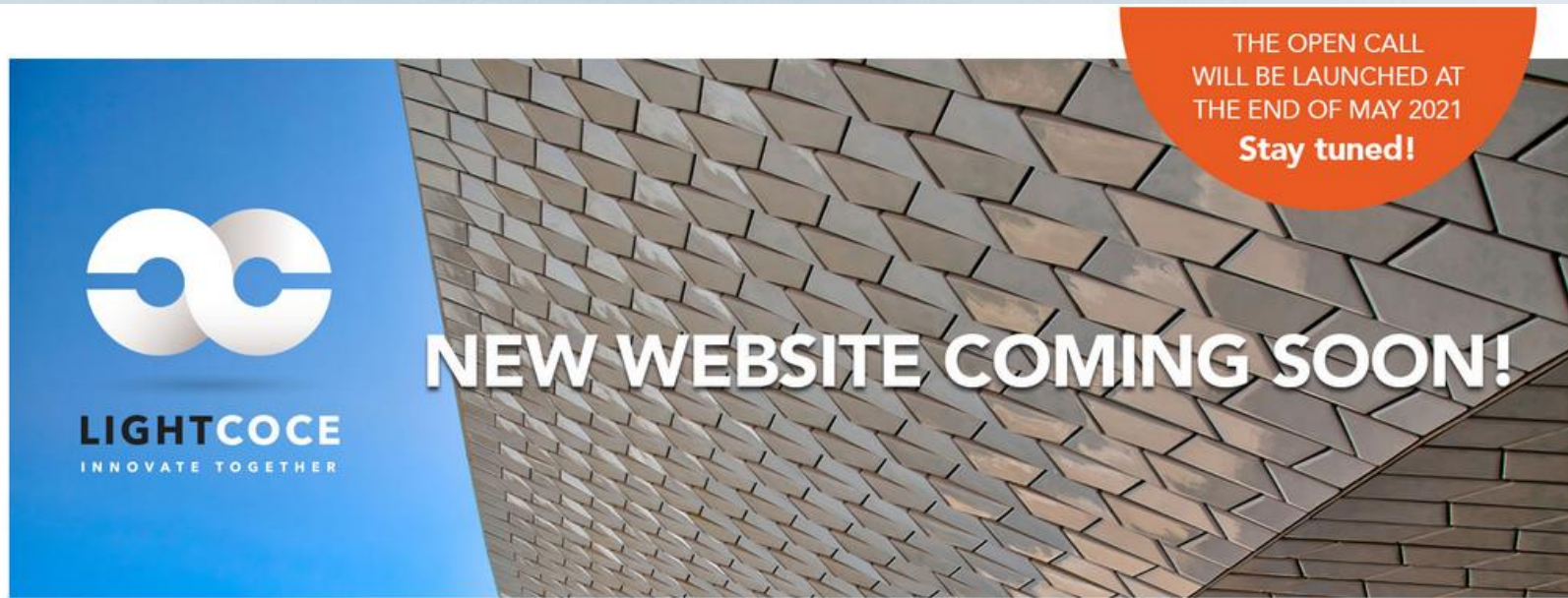


Application procedure

- Submission through the LightCoce Open Call platform at: <http://lightcoce.com>
- Registration in the platform
- Online form
 - ☐ Legal Entity's General information
 - ☐ Official representative of the legal entity
 - ☐ Interest in LightCoce services
 - ☐ Test case general features
 - ☐ Information on the proposed test case (concept of the idea, milestones achieved so far, requested services, technical workplan) – max 9 pages
 - ☐ Data privacy policy



The LightCoce platform



NEW WEBSITE COMING SOON!

THE OPEN CALL
WILL BE LAUNCHED AT
THE END OF MAY 2021
Stay tuned!

LIGHTCOCE
INNOVATE TOGETHER

About LightCoce

LightCoce is a one stop shop providing holistic services for the development of novel concepts, in the fields of lightweight concrete, as well as conventional and advanced ceramics. LightCoce services cover the whole value chain from the upscaling of a new product, material or technology to its commercialization.

OPEN CALL

From SMEs to large enterprise, industries and R&D organizations, our open call is addressed to anyone interested in having free of charge access to all services and facilities available in the LightCoce ecosystem and the opportunity to innovate and develop a business idea through a one stop shop!

In the meantime, you can reach us for any questions / requests at:
info@lightcoce.com



LIGHTCOCE
INNOVATE TOGETHER

OPEN CALL
WILL BE LAUNCHED
AT THE END
OF MAY 2021



LIGHTCOCE
INNOVATE TOGETHER

APPLY TO LIGHTCOCE OPEN CALL

Gain access to
services driven
by your special
business needs

TAKE PART IN THE LIGHTCOCE OPEN CALL!

Are Lightweight Ceramics or Concrete an essential part of your business?

From SMEs to large enterprise, industries and R&D organizations, our open call is addressed to anyone interested in having free of charge access to the range of services and facilities available in the LightCoce ecosystem, covering the access to five pilot lines for concrete and ceramics' Upscaling and testing, as well as complementary services supporting the commercialization of these materials, such as characterisation, process modelling, quality assurance and monitoring, standardisation, safety, market uptake and innovation management services.



Take the opportunity to innovate and develop
a business idea through a one stop shop!

APPLY TO THE OPEN CALL AND:

Develop your novel business
idea within the lightweight
materials' value chain,
free of charge

Receive mentoring and support from
highly specialized Universities, research
organizations and high-tech companies
from all over Europe

FOLLOW OUR OPEN CALL THROUGH THE LIGHTCOCE ONLINE PLATFORM: <http://lightcoce.com>

LightCoce is an one stop shop providing holistic services for the development of novel concepts, in the fields of lightweight concrete, as well as conventional and advanced ceramics. LightCoce services cover the whole value chain from the upscaling of a new product, material or technology to its commercialization.

Find out more at <https://www.lightcoce-oitb.eu/en/normal/home>

**INNOVATE AND DEVELOP YOUR BUSINESS IDEA THROUGH
A ONE STOP SHOP**

The open call has received funding from the European Union's Horizon 2020 Research and Innovation Programme under Grant Agreement No 814632



Find out more at:



<https://www.lightcoce-oitb.eu/en/normal/home>



<https://www.facebook.com/LightCocce/>



<https://www.linkedin.com/company/lightcoce-project/>



LIGHTCOCE
INNOVATE TOGETHER

T +30 210 7722174 | E taxiarh@metal.ntua.gr info@lightcoce.com | www.lightcoce.com