

Automotive

We provide

Research and development in the field of efficient automotive engineering, focusing on lightweight design, structural mechanics, energy storage for e-mobility and systems integration, but also to enable competitive production in a high wage country.

We are looking for research cooperations and opportunities to be involved in international project consortia.

Electromobility	Automotive/ Embedded Systems	Feedback control systems or automotive applications
Hybrid structures	Lightweight design and systems engineering	Structural and solid mechanics
Materials science and analysis	Material flow systems	Efficient use of resources
Energy storage with lithium ion batteries	Electrical drives	Utility vehicle engineering

University of Applied Sciences
Landshut

Landshut/ Germany

Automotive

www.haw-landshut.de

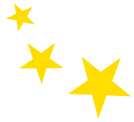


HOCHSCHULE LANDSHUT
UNIVERSITY OF APPLIED SCIENCES

Contact Details

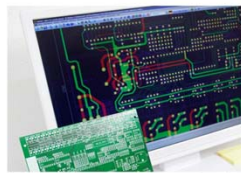
Caroline Eberl
research manager
caroline.eberl@haw-landshut.de

Dr. Hedwig Maurer
research manager
hedwig.maurer@haw-landshut.de

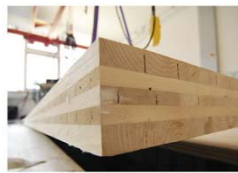


Research hub near the mountains

From robotics and building automation to biomaterials science and eLearning; **Rosenheim University** of Applied Sciences is equipped with multifaceted and interdisciplinary skills in the applied research and development sector. With its own research and development department, **Rosenheim University** of Applied Sciences offers individualized services for a variety of interest groups: industry partners, tertiary institutions, inventors, and students.



Information & Communication



New Materials & Components



Energy-efficient Buildings & Technologies



Production, Automation, Logistics



Design



Market Research



Healthcare

University Rosenheim

Bavaria/Germany

Research areas:

- Information and communication
- New Materials/Building components
- Energy technology and efficiency
- Production, automation, logistics
- Market research
- Design

Existing partnerships:

- Fraunhofer Institut
- Universities, Research Institutes
- Enterprises (SME → Industry)



Hochschule **Rosenheim**
University of Applied Sciences



Contact Details

Wolfgang Alversammer
Research and Development
+49 8031 805 2381

Wolfgang.alversammer@fh-rosenheim.de

www.fh-rosenheim.de

Research projects: www.fh-rosenheim.de/fue.html