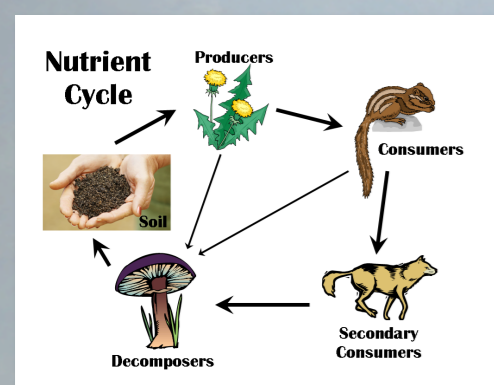


Cities like Forests

From coffee waste recycling to sustainability!



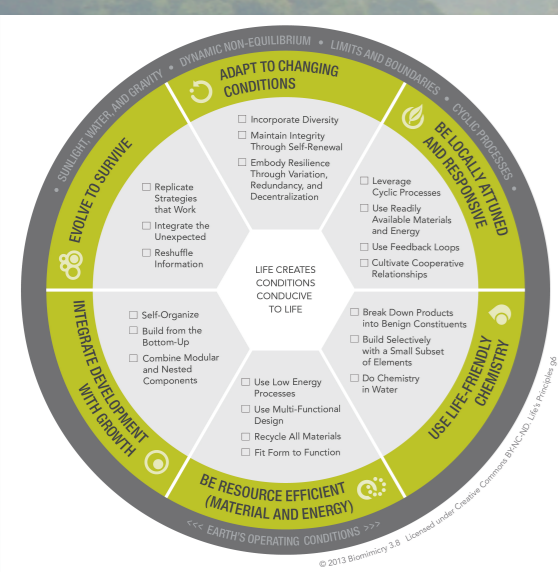
There is no waste in nature.
Image : www.rbnc.org

In a world of less energy and resources, Biomimicry uses Nature as a Mentor to solve actual problems. Cities may be considered as organisms and the study of its metabolism may lead to systems optimization and sustainability using an ecosystemic approach.

Coffee waste recycling used to produce high quality mushroom is the first step for the establishment of circular economy in urban environment. The objective is to establish a complete ecosystem fulfilling basic human needs (food, drinkable water, energy, oxygen,...).

The positive side-effects will be the establishment of innovative processes in urbanization. This will lead to a better comprehension on how ecosystems works, will help rehabilitating polluted places and promote sustainability. These advancements will also help for space exploration.

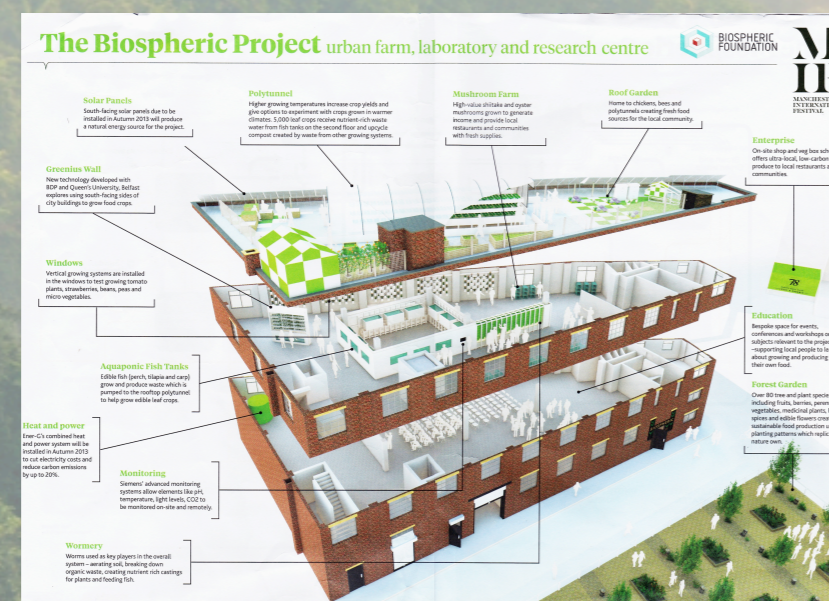
Coffee waste is actually used for the production of high quality mushroom (*Pleurotus ostreatus*). Production may be diversified and other organic waste tested. Champost is also actually tested for biomethanization, compost production and treatment of polluted soils. We are looking for partners.



Life principles :
Basis for ecosystemic solutions
Image : biomimicry 3.8



Permaculture principles
as design-tools.
Image : Holmgren's permaculture flower



Biospheric Project :
already existing building in Manchester
Image : Biospheric Foundation, Manchester, UK



Background Image : Forest scenery of Gede Pangrango, Indonesia in the morning. Credit CIFOR/R.Martin

Morpho-Biomimicry, B
GAL du Condruces, B
Centre de Technologie Agronomique, B
Haute Ecole Charlemagne ISla Huy, B
ADISIF, B
Winergies - Blue Economy, B
Biospheric Foundation, UK
Ryerson University, Ca



Morpho-Biomimicry
Green can be Gold



CENTRE DES TECHNOLOGIES AGRONOMIQUES



heCh
CHARLEMAGNE



Fungi Up!

Contact Details

Hoornaert Stephan
Morpho-biomimicry
23 Av. F. Ferrer
B-4030 Liège, Belgium
+32 (0) 486 477 015

Biomimicry.be@gmail.com
www.morpho-biomimicry.be

Pécheur Jean François
GAL Condruces
Rue de la Charmille, 16
B-4577 Strée, Belgium
+32 (0) 85 274 977

jeanfrancois.pecheur@galcondruses.be
www.galcondruses.be