

## Hochschule Geisenheim University

**in step with actual practice / modern / globally connected**

Research at Hochschule Geisenheim University (hs-gm) concentrates on special crops and studies the entire value chain, from the surrounding environment and the plant itself to processing and quality control of their products as well as marketing and business economics of associated enterprises. A particular focus uniting most research groups at hs-gm are the effects of climate change on special crops and their products.

### The Geisenheim FACE for Special Crops: Free Air Carbon Dioxide Enrichment



The Geisenheim FACE experiment for special crops is assessing the effects of increasing atmospheric CO<sub>2</sub>-concentrations on cultivation, physiology, pest and disease pressure as well as on quality of grapes and vegetables.

The federal state of Hessen supports the Geisenheim FACE experiment within the LOEWE program for research excellence.



**LOEWE**

Exzellente Forschung für  
Hessens Zukunft

### Exemplary other projects

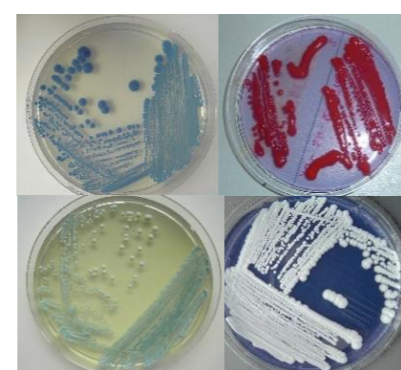


**Symptoms of vascular wilt in lamb's lettuce (*Valerianella locusta*):** Various biotests, pyrosequencing and metabolomics

are applied to identify putative causal agents of this disease, which is the basis for the design of new control strategies.

### Development of molecular markers for columnar growth of apple:

Transposon insertion responsible for phenotype is studied by over-expression and knockout on transgenic lines followed by transcriptomics.



### Biodiversity in yeast:

Identification of individual yeast species and strains via FTIR spectroscopy and its application in enology and beverage production

Hochschule Geisenheim University

Geisenheim, Germany

### Research Areas:

**Viticulture, Enology, Wine Business, Beverage Technology, Horticulture and Landscape Architecture.**

With a broad spectrum of applied and basic approaches in all research areas.



Hochschule  
**Geisenheim**  
University

### Contact Details

Dr. Christiane Jost  
Office of Research Affairs and Grant  
Management  
+ 49 6722 502 634  
christiane.jost@hs-gm.de

<http://www.hs-geisenheim.de/startseite.html>